

Nome: _____

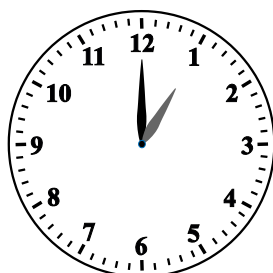
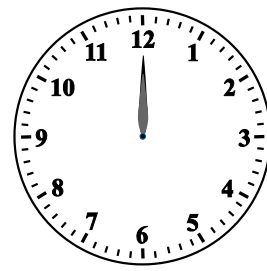
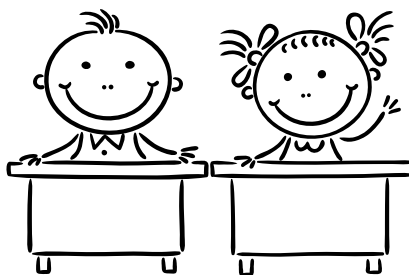
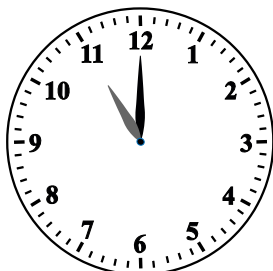
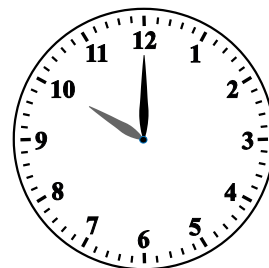
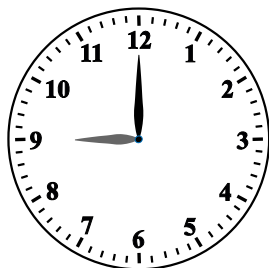
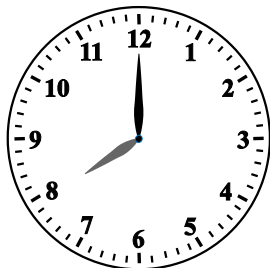
Data: _____



LA MATTINA A SCUOLA

La maestra
Ilaria

PRIMA OSSERVA LE LANCETTE COMPLETA LE
ETICHETTE



LA MATTINA A
SCUOLA SI È
CONCLUSA È
ORA DI PRANZO!



È PASSATA MEZZA GIORNATA, MA
CONTINUA CON LE ORE GEMELLE!
LE ORE SUCCESSIVE SI DICONO
POMERIDIANE.

Nome: _____

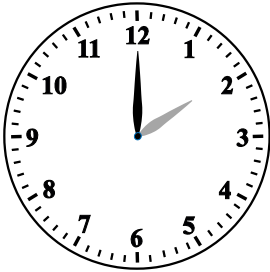
Data: _____



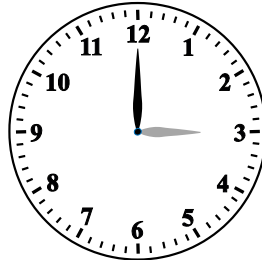
LE ORE POMERIDIANE

La maestra
Ilaria

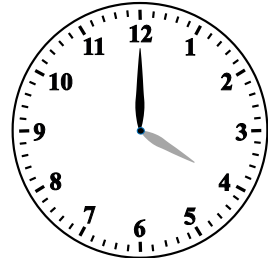
PRIMA OSSERVA LE LANCETTE COMPLETA LE
ETICHETTE



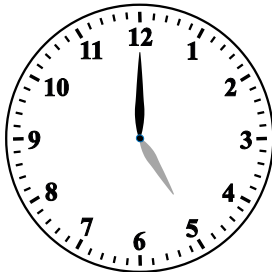
SONO LE



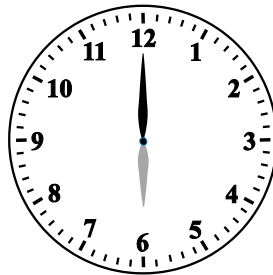
SONO LE



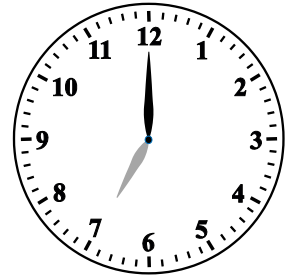
SONO LE



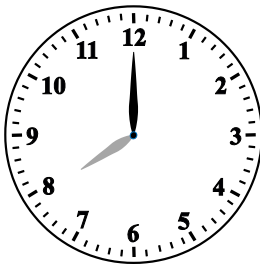
SONO LE



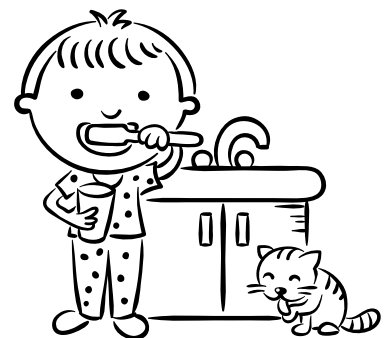
SONO LE



SONO LE



LA GIORNATA
SI È CONCLUSA
È ORA
DI RIPOSARE!



È PASSATA UN'INTERA GIORNATA,
LE ORE CONTINUANO A SCORRERE
ANCHE MENTRE DORMIAMO.

